



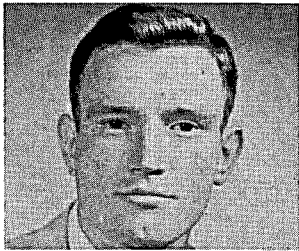
Nuntius

Published by Eta Sigma Phi

VOLUME 35

NOVEMBER, 1960

NUMBER 1



MEGAS PRYTANIS THOMAS P. LORDEON is now a senior at Marshall College, which he entered after working for four years as a truck dispatcher for the United States Steel Corporation at Homestead, Pennsylvania. His experiences in the business world and then in the educational world have given him an opportunity to contrast the two and he has found a real enjoyment in college life because, in his own words, "college is not merely eight hours a day that one spends getting money for things he wants to do the other sixteen hours of the day but it gives one a feeling of accomplishment." Pat's major is political science and he has been on the Dean's List during the past four semesters.

Delegates to our 32nd National Convention will remember Pat as our genial and efficient host. He was the Prytanis of Beta Upsilon Chapter of Eta Sigma Phi last year and effectively planned our successful convention at Huntington.

Pat was interested in sports when he attended Homestead High School and received letters in basketball and track. At Marshall he has not participated in intermural sports but played intramural basketball with the team of the Men's Dorm. Our Prytanis is interested in debating and hopes to be a member of the debating squad this year. Last year he was Vice-president of the International Relations Club, which sponsors lectures and discussions.

Reading is Pat's hobby but like most of us he finds that there is not enough time to read the books which he would like to read. He also likes to fish, swim, and hunt but his college activities permit him little time for this. Pat intends to become a teacher but he also has some idea of studying law.

Message from our Megas Prytanis

Dear Members of Eta Sigma Phi:

I should like to take this opportunity to greet our new members and welcome back the old.

It would be capital if all the chapters could attend this year's National Convention in Milwaukee on March 17 and 18. Transportation and other difficulties, however, may make this impossible. We should like to see many chapters attend because this is the one opportunity we have to compare and contrast ideas. There will be more information concerning the convention later.

I thank you for entrusting the presidency to me for this year and I hope to live up to your expectations. Any suggestions you may have for the improvement of our Fraternity will be appreciated. I trust that you have started off well and will have a good year.

Best wishes,
THOMAS P. LORDEON

Thirty-Third National Convention, March 17 and 18

Our Thirty-third National Convention will be held in Milwaukee, Wisconsin, on March 17 and 18, 1961. Beta Sigma Chapter of Marquette University will be the host chapter but Beta Omicron Chapter of Mount Mary College and Gamma Gamma Chapter of the University of Wisconsin-Milwaukee, will assist. Mr. Tom Chmielewski, Prytanis of Beta Sigma Chapter, will be the Chairman of the Local Committee under the direction of Professor Richard E. Arnold, S. J., Advisor of the Chapter. Megas Grammateus Dianne Haering of Beta Omicron Chapter and Mr. Ronald Hehn of Gamma Gamma Chapter will represent their chapters on the Committee. Mr. James S. Frey of Beta Sigma Chapter, who spoke so eloquently in his invitation speech at the Thirty-second Convention, is now a graduate student at Loyola University in Chicago and will be able to assist in planning the entertainment for the delegates. We are promised a tour of the beautiful city of Milwaukee with stops at some of its more interesting institution, e.g., the famous new Milwaukee Art Center and the campuses

of the local chapters. Megas Prytanis Lordeon has suggested that inasmuch as there was evidence of lack of knowledge of parliamentary procedure at the last national meeting it might be well for the delegates to read Robert's RULES OF ORDER, REVISED. Perhaps the delegates would prefer to use the customs of the Roman Senate, with which they might be more familiar. NOW is the time for each chapter to begin its plans for representation in Milwaukee on March 17 and 18.

Eta Sigma Phi to Award Two Scholarships

Professor Graydon W. Regenos, Chairman of our Board of Trustees, has announced that Eta Sigma Phi will award two scholarships in 1961 for study abroad instead of the one scholarship which has been awarded in the past. Members of the Thirty-second National Convention gave our Board of Trustees permission to award an additional scholarship if it should be financially possible. A study of the finances of the Fraternity revealed that this was possible and accordingly two awards will be made about March 1 for study abroad during the summer of 1961.

(Continued on Page 11)

Other Members of Grand Executive Council

MEGAS HYPARCHOS RAYMOND H. PHYLES, a senior at Gettysburg College majoring in philosophy, is an honor student whose name appears regularly on the Dean's Academic Honor List. In addition to being our Megas Hyparchos he is Prytanis of Alpha Pi Chapter, President of Pennsylvania Gamma of Phi Sigma Tau, Secretary of Zeta Sigma of Sigma Nu, and an assistant Freshman Adviser. He hopes to have some time also for his hobby of reading.



Ray was an active participant in many activities at Parkville High School, Baltimore County, Maryland, and also an outstanding student. At the time of his graduation he received the Award for Diligence in the Study of the Latin Language, which was presented by the Harvard Club of Maryland. He received awards also for Service and Scholarship, was elected to the National Honor Society, and was voted the most likely to succeed. Among his many activities were the school newspaper, student director of two plays, representative of his high school in an American Legion Oratorical Contest, secretary of the Graduation Committee of the Parent-Teacher Student Association, and president of the Senior Class.

At Gettysburg College Ray has had a similar record. In his freshman year he received the Garver Greek Prize for Freshmen. He was elected to Alpha Pi Chapter of Eta Sigma Phi in his sophomore year and to Phi Sigma Tau, honorary society for students of philosophy, in his junior year. At the national convention of Phi Sigma Tau he delivered a paper in the field of Ethics. He has been a member of the Air Force R. O. T. C. Drill Team, was initiated into the Arnold Air Society, and served on the Student Senate and the World Relatedness Committee of the Student Christian Association.

Our Hyparchos intends to become a Lutheran minister and he has been active in the work of his church for many years. He is a Sunday School teacher, was president of the Luther League for three terms, served as a dele-

gate to the National Luther League Convention, was Christian Vocation Secretary of the Baltimore District Luther League and assistant Liturgist at his church. He is now an adviser to the Junior Luther League of the college church.

MEGAS GRAMMATEUS DIANNE HAERING entered Mount Mary College after her graduation from Shorewood High School. She is a native of Thiensville, Wisconsin, a suburban community about fifteen miles north of Milwaukee. Dianne became interested in the Classics, news writing and science in high school. Her outside activities included sports, dancing, piano, dramatics and student government. In her senior year she was elected to the National Honor Society and to Quil and Scroll.



As a senior at Mount Mary College Dianne is majoring in secondary education. Latin, English, and biology are the subjects which she hopes to teach when she receives a position next fall. During her college career she has participated in student leadership and government, has worked on and headed social committees and has been a member and officer of Beta Omicron Chapter of Eta Sigma Phi for two years. Our Secretary also serves on the student speaker's bureau, which is a program intended to bridge the gap between adults and adolescents. She has recently been accepted into Sodality and is certified for Catholic Catechetical instruction.

Summer vacation usually finds Dianne at her father's sausage manufacturing plant where she helps with making, wrapping, and delivering sausages. Frequent trips to northern Wisconsin are also part of her summer activities.

Dianne is anticipating a semester of student teaching. As President of the Senior Class she will have added responsibilities and duties but her real pleasure of the year will be to welcome the delegates to our Thirty-third National Convention to Milwaukee.

MEGAS CHRYSOPHYLAX FRANK M. COFONE lived in Europe extensively before he entered Montclair State College. During eight years of active ser-

vice in the United States Army he was stationed for three years at Trieste as a clerical worker and interpreter. When he returned to this country after his assignment there, he attended the Army Advanced Administration School at Fort Harrison, Indiana, and upon completion of his training Frank was assigned to Austria. He served in Austria until the withdrawal of American Forces brought him a new assignment at Mannheim, Germany. Seven months later he returned to Italy as an interpreter in German, Italian, French and English.



Frank was born in Newark, New Jersey, where he now lives, but he attended the public schools of Lyndhurst, New Jersey. At Lyndhurst High School he studied Latin for four years and was a member of the Latin Club and also of the Journalism Club. At Montclair State College Frank is majoring in Latin and the Classics but is also interested in French, German, and art. The activities of Gamma Nu Chapter of Eta Sigma Phi are under his direction this year as Prytanis of the chapter. He is also a member of Inter Nos Latin Club and of the French Club and German Club.

Classics are Frank's chief interest and at the completion of this his senior year he plans to continue to work in this field. He hopes to attend the Summer Session of the American Academy in Rome and perhaps the Vergilian School at Cumae following that. In the meantime he is busy paying the bills of Eta Sigma Phi and watching our finances.

Dr. Bale Represents The Fraternity

Eta Sigma Phi was one of the learned societies of the United States which were requested to send official representatives to the inauguration of Dr. Judson William Foust as President of Central Michigan University at Mount Pleasant last spring. Professor O. Ferdinand Bale, Adviser of Gamma Zeta Chapter at Albion College, very graciously served as our representative. It was an honor for our Fraternity to be requested to send a representative and also an honor to be represented by Professor Bale.

The Endowment Fund

The total amount of our Endowment Fund, as reported on our annual income tax report dated August 31, 1960, was \$8,671.01. This includes our investments which are subject to market fluctuations. It was the ambition of your Executive Secretary to be able to report to the members of Eta Sigma Phi that our goal of \$10,000.00 had been reached on June 1, 1960. Although it is disappointing to report our failure to reach this figure, there is no need to be discouraged. The more frequent and more generous contributions of last year encourage the Officers and Members of the Board of Trustees to hope that we shall reach our goal, and maybe exceed it by June 1, 1961. In behalf of all members of Eta Sigma Phi each chapter is urged to make a contribution to the Fund, whether it be a first contribution or an additional one. Your chapter might want to follow the example of Gamma Tau Chapter at Mississippi College which contributed \$50.00 last year from the sale of candy. Professor Thomas T. Boswell, Adviser of Gamma Tau Chapter, our youngest chapter at the time of the contribution, will be pleased to correspond with any chapters which would like to raise money by the easy and profitable method of his Chapter. Professor Boswell's comment about our Scholarship program expresses the feelings of all who have had the privilege of studying at Rome or Athens: "I pushed this campaign with the chapter because I know how much a summer at one of the two schools can mean to the Classical student. I had the pleasure of studying under Dr. Rowell at the American Academy in Rome. Even though it has been almost ten years since that study, I find that it is still just as much a source of inspiration now as it was when I first returned." Miss Martha G. Thomas, our Eta Sigma Phi Scholar for 1960, who is an alumna of Alpha Delta Chapter at Agnes Scott College and now a graduate student at Bryn Mawr College, writes that "My summer in Rome was completely delightful and I am very grateful to Eta Sigma Phi for making it possible." *Verb. sap. Bis das si cito das.*

Eta Sigma Phi Publications

ANGELIA, the official publication of the Wisconsin Chapters of Eta Sigma Phi, was edited by James Frey and Michael Nolan of Beta Sigma Chapter, Marquette University. This was Volume VII and is dated May, 1960. This year's volume maintained the high standards and interest of other volumes. It contains a report of the State Convention, which was held on March 26, and reports from each of the four member chapters. Carol Winker of Beta Omicron Chapter, Mount Mary College, contributed a review of THE ODYSSEY: A MODERN SEQUEL by Nikos Kazantzakis. Additional copies of ANGELIA were printed this year and were distributed to the other chapters of Eta Sigma Phi so far as the supply permitted. If you did not receive a copy, the Wisconsin Chapters will be happy to send one next year if you so request.

PHI OMEGA SIGMA, published by the Classics Club of Le Moyne College is now in its eighth volume. Gamma Phi Chapter was formed from the Classics Club and some of its members have contributed to PHI OMEGA SIGMA in the past and will doubtless continue to be contributors. This is a most scholarly publication and includes some very interesting and informative material. An account of the chartering of Gamma Phi Chapter was included in Vol. 7, No. 5, under the heading "Good News."

CONTRIBUTORS TO THE ENDOWMENT FUND

Pi, Birmingham-Southern College
(bis)
Beta Upsilon, Marshall College
(bis)
Alpha Chi, Tulane University
Gamma Alpha, Indiana State
Teachers College (bis)
Beta Alpha, State University of
South Dakota
Beta Lambda, Marymount
College
Gamma, Ohio University
Gamma Gamma, University of
Wisconsin-Milwaukee
Anonymous Donor
Alpha Upsilon, The College of
Wooster
Beta Kappa, College of Notre
Dame of Maryland
Douglas C. Burger
Beta Zeta, Saint Louis University
Alpha Delta, Agnes Scott College
Gamma Tau, Mississippi College

New Books By Chapter Advisers

Several of our advisers have recently published books. Your editor has learned of the following, which he brings to your attention:

Professor Graydon W. Regenos, Chairman of our Board of Trustees and Adviser of Alpha Chi Chapter, Tulane University, recently published his scholarly translation of a satirical poem by Nigellus Wireker. Wireker was a determined critic of the twelfth century and its evils who sought to change his fellow humans by forcing them to laugh at themselves. NIGELLUS WIREKER. THE BOOK OF DAUN BURNEL THE ASS, translated by Graydon W. Regenos was published by the University of Texas Press, Austin, early this year. Professor Regenos' translation is both scholarly and amusing.

Sister Mary Isaac Jogues Rousseau, one of the Advisers of Beta Omicron Chapter, Mount Mary College, Milwaukee, has published her edition of the manuscript of Fulcoius of Beauvais with an introduction and notes. Fulcoius of Beauvais was an eleventh-century poet of France who was a prolific writer of Latin verse. Sister Mary Isaac Jogues' edition is carefully done and very scholarly. This is an *editio princeps* of Fulcoius' *De Nuptiis* and makes possible a better understanding of this author. FULCOII BELVACENSIS UTRIUSQUE DE NUPTIIS CHRISTI ET ECCLESIAE LIBRI SEPTEM by Sister Mary Isaac Jogues Rousseau, S.S.N.D., was published by the Catholic University of America Press, Washington, D. C., as Volume XXII, STUDIES IN MEDIEVAL AND RENAISSANCE LATIN LANGUAGE AND LITERATURE.

Professor Bernice Fox, Adviser of Gamma Omicron Chapter, Monmouth College, Monmouth, Illinois, and Professor Garrett W. Thiessen, a member of the faculty of Monmouth College and a member of Gamma Omicron Chapter, have recently published PARAPHRASES FROM THE LATIN POETS, which contains their former POEMS FROM THE LATIN and MORE POEMS FROM THE LATIN and twenty-four new poems. Several of the former poems have been published in NUNTIUS and we expect to publish some of the new ones soon. PARAPHRASES FROM THE LATIN POETS was published by Fine Printing, Monmouth, and is an attractive volume of interesting and entertaining English versions of Latin poems.

NUNTIUS

VOL. 35

NOVEMBER, 1960

No. 1

Published four times during the academic year: November 15, January 15, March 15, and May 15. Sent without charge to all active members of Eta Sigma Phi, for each year in which dues are paid. Price to others: \$1.00 per year. All communications regarding publication or business should be addressed to *The Editor: H. R. Butts, Birmingham-Southern College, Birmingham 4, Alabama.*

Official Publication of Eta Sigma Phi, National Honorary Classical Fraternity, Founded in 1914, Nationalized in 1924, Incorporated under the laws of the State of Illinois, June 20, 1927.

Published By Vulcan Printing & Lithographing, Birmingham, Alabama

OFFICERS

THOMAS P. LORDEON—Marshall College, Huntington, West Virginia.....National President
 RAYMOND H. PHYLES—Gettysburg College, Gettysburg, Pennsylvania.....National Vice-President
 DIANNE HAERING—Mount Mary College, Milwaukee, Wisconsin.....National Secretary
 FRANK M. COFONE—Montclair State College, Montclair, New Jersey.....National Treasurer

BOARD OF TRUSTEES

Professor Graydon W. Regenos (1961)
 Tulane University, New Orleans, Louisiana, CHAIRMAN
 Professor Gertrude Ewing (1963)
 Indiana State Teachers College, Terre Haute, Indiana
 Professor William C. Korfmacher (1961)
 Saint Louis University, Saint Louis, Missouri
 Professor Paul R. Murphy (1962)
 Ohio University, Athens, Ohio
 Professor Norman T. Pratt, Jr. (1962)
 Indiana University, Bloomington, Indiana

HONORARY PRESIDENT

Professor Gertrude Smith
 *University of Chicago, Chicago 37, Illinois

EXECUTIVE SECRETARY

Professor H. R. Butts
 Birmingham-Southern College, Birmingham 4, Alabama

Greek. All members of Eta Sigma Phi who are enrolled in advanced courses in Greek are urged to participate in this. You will observe that the *Chapter Foreign Language Census* has been restored to the list of contests. This has not been listed in recent years because so few chapters participated in the last census. This is an excellent contest among our own chapters and each chapter should have at least one entrant in this contest. Participation in the contests is now limited to students who are candidates for the degree of Bachelor of Arts. Your editor is proud to announce that the Essay Contest for 1960 was won by a member of our Fraternity. It would be a pleasure to announce a year from now that several of the contests were won by members of Eta Sigma Phi.

Does your chapter like publicity? Do you enjoy reading about yourself or members of your own chapter? Would you like to share with others the interesting programs and projects which your chapter sponsors? If your answer to any one of these questions is "yes," please have your secretary or some members of your chapter send news items to your editor. Only by your cooperation is it possible to continue the section "Among the Chapters."

Do you have some ideas which you would like to share with others? Are you pleased with a paper which you have written and would like for others to read it? Have you made some verse translations of which you are proud? You may share these with others if you send them to your editor. Last year it was possible to print two timely and interesting articles by members of Eta Sigma Phi and one of them was so provocative that our Anonymous Donor permitted the editor to make an award to this writer. Today scholars are crying for opportunities to publish their works but because of the limited number of pages in classical publications, many are denied the privilege of seeing their ideas in print. If you are an active member of Eta Sigma Phi, you are offered the opportunity to publish your work. This, however, is not a guarantee that everything received will find its way into NUNTIUS but as many articles or poems as are worthy of publication will be published unless we should have such a flood of material that space would not permit; this, however, does not seem even a remote possibility.

From Your Editor . . .

It is with real joy and pleasure that your editor dedicates this issue of NUNTIUS to our new chapters and introduces them to the members of our Fraternity. All members, we are sure, extend congratulations to our younger chapters and wish them every success in the present academic year and for the future. Each new chapter has expressed to me its appreciation of the letters and telegrams which it received from the other chapters at the time of the installation of the new chapter and has asked that I convey to you its deep gratitude for your expression of good wishes.

There are now sixty-six active chapters, which may represent a record number of active chapters although exact information on this point is not available. It is good to have so many chapters so widely scattered throughout the United States but your Editor looks forward to seeing chapters in every one of the fifty states and perhaps to the time when Eta Sigma Phi may be not a national fraternity but an international one. Some progress

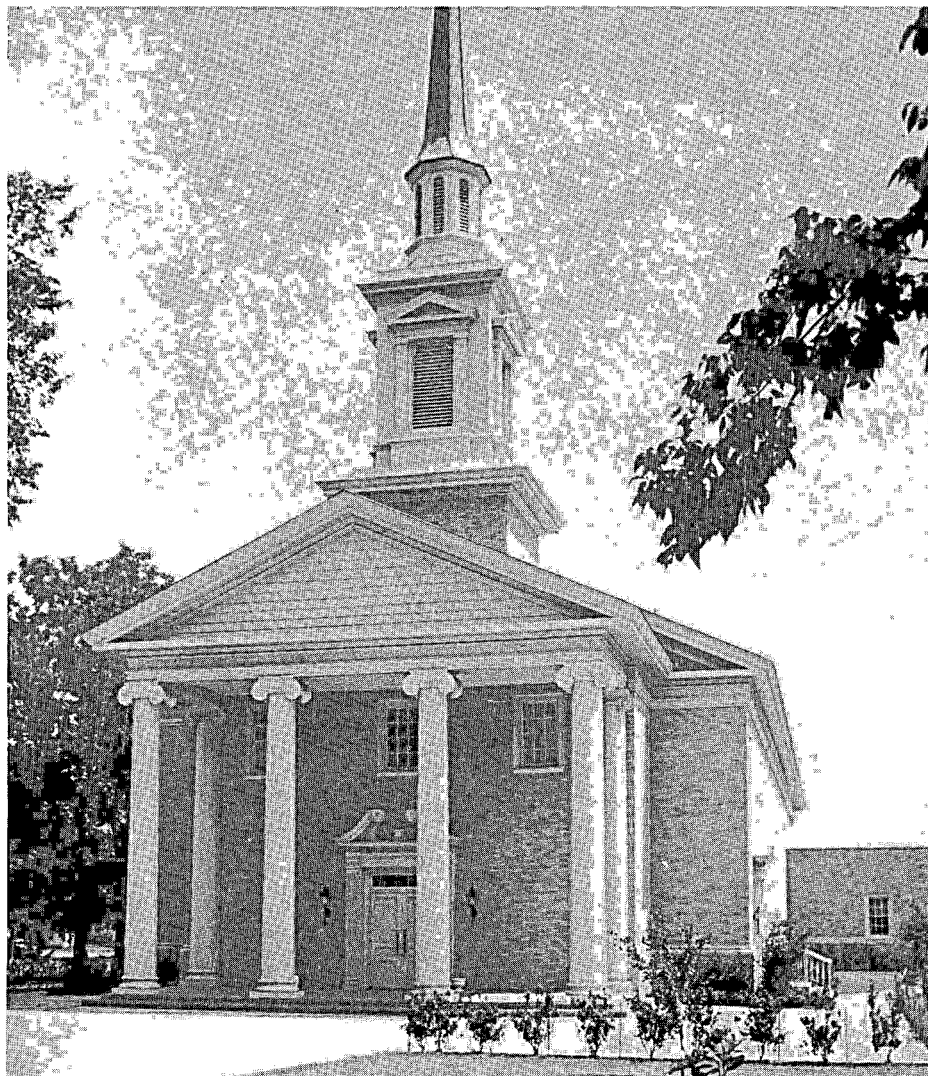
along this line has been made recently.

Another mark of progress which is anticipated is the formation of more state organizations, such as that in Wisconsin. Several states now have more than one chapter and it would be excellent if these could organize into state groups and have state meetings.

Your special attention is invited to the announcement of the Eta Sigma Phi Contests for 1961. You will notice several innovations which are the result of a study of the Contests and suggestions from several institutions which have had contestants competing in the contests in the past. The date for mailing all contests to the Executive Secretary is now March 1, 1961, instead of the former earlier date, and contestants must register by February 10. This will permit those who enter the Essay Contest a longer time for preparation of essay and also not make the contests so near the beginning of the second semester. The contests are now announced earlier to permit a longer time of preparation for each contest. Most significant is the *new* contest, a contest in Greek prose composition for advanced students of

Gamma Upsilon

OUR NEW CHAPTERS



Wynne Chapel, Austin College

Gamma Upsilon Chapter of Eta Sigma Phi was installed at Austin College in Sherman, Texas, on May 4, 1960. Professor A. Pelzer Wagener, visiting Professor of Classics at the College and Adviser Emeritus of Omega Chapter at the College of William and Mary, installed the new chapter. The ceremony at which eighteen charter members were installed took place in the late afternoon and was followed by an informal dinner in the College Dining Hall.

Gamma Upsilon Chapter was founded by students who were members of the Classical Club, which was organized in 1959 under the direction of Professor Mary E. McKinney, Professor of Classics at Austin College. Professor McKinney was the founder of Gamma Zeta Chapter at Albion College and Adviser of that chapter for many

years. Her deep interest in Eta Sigma Phi lead her to establish the Club with the object of obtaining a charter for a chapter of the Fraternity. Final plans for the organization of the chapter were made under the direction of Professor John P. Cavarinos, now Head of the Department of Classics at the College, who was ably assisted by Miss Phyllis Moore, a member of the Club who became Gamma Upsilon's first Prytanis.

Austin College is a four-year fully accredited coeducational College of Liberal Arts which was founded by and has been continually affiliated with the Presbyterian Church, U. S. When three Presbyterian ministers met on April 3, 1840, in the Republic of Texas with the Reverend David Baker, then on his first missionary visit to Texas, to organize the Presbytery of

Brazos, they agreed that their church must establish a college in Texas. Texas had become a state in the Union before the college was organized and its charter, modelled on those of Harvard, Yale, and Princeton, was granted by the Legislature of the State of Texas on November 22, 1849. Among the first Trustees of the new college, which was named in memory of Stephen F. Austin, a staunch proponent of education and close friend during his lifetime of many of the members of the Board, were the Reverend Mr. Baker, the real founder of the College, and Sam Houston, who presented the college bell, which now hangs in Wynne Chapel. A library was the gift of the Smithsonian Institution, and the Professor of Natural Philosophy of the new faculty was the Texas meteorologist for the Institution. Austin College moved from its first campus at Huntsville, now used by Sam Houston State Teachers College, to Sherman in 1876. Texas Presbyterian College for Women was combined with Austin College in 1930 and since 1934 the support and control of the College has been assumed jointly by the Synod of Texas and the Synod of Oklahoma. Under its rapidly expanding program the College now grants the baccalaureate and the M.A. in a limited number of fields and is increasing its capacity to care for one thousand students instead of its present enrollment of about eight hundred and fifty. Classics have a long tradition at Austin College, since Freshmen entering the first classes were required to demonstrate a reading knowledge of Latin and Greek and candidates for degrees had to present four years of work in Latin and Greek. Although knowledge of a foreign language is required for graduation today, other languages than Latin and Greek may be presented. Interest in the Classics has been maintained and under the direction of the recent faculties in Classics, the enrollment in the Department has grown and about ten percent of the student body is enrolled in the department. (Information for the last paragraph taken from AUSTIN COLLEGE BULLETIN, Vol. XLIX, No. 4, April 1957).

Officers of Gamma Upsilon Chapter are: Prytanis Phyllis Moore, Hyparchos Judi Pogue, Grammateus David Duncan, Epistolographos Mary Liscum, and Chrysophylax Jim Tom Ainsworth. Dr. John P. Cavarinos is the Adviser.

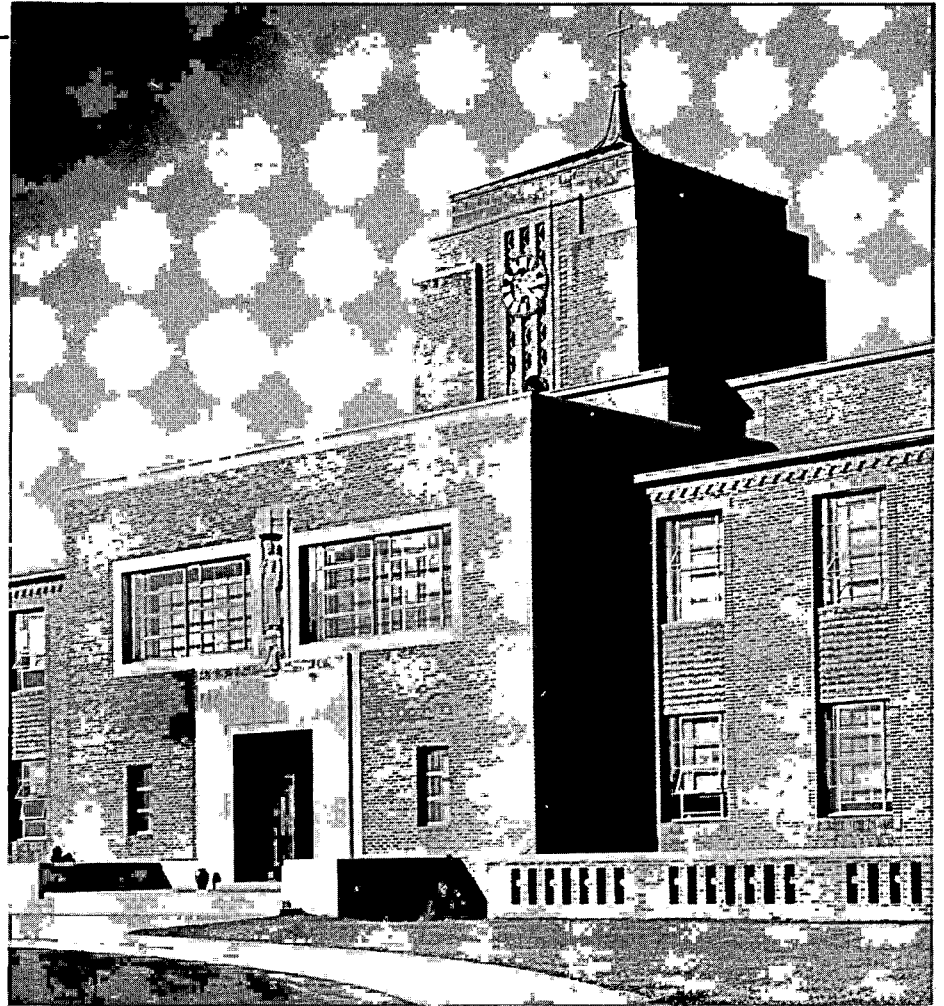
Gamma Phi

OUR NEW CHAPTERS

Gamma Phi Chapter of Eta Sigma Phi was installed at Le Moyne College in Syracuse, New York, on May 14, 1960. The impressive initiation and installation of the new chapter were conducted by Professor Hugh H. Davis, Chairman of the Department of Classical Languages at Le Moyne College and an alumnus of Gamma Chapter at Ohio University. Prior to the installation of the new chapter Professor Davis initiated five seniors to serve as assistants in the ceremony and as temporary officers of the chapter. Twenty-four charter members were initiated and the Reverend John J. Jennings, S. J. and the Reverend James M. Carmody, S. J. were initiated from the Faculty as honorary members. Following the installation the new members enjoyed a delicious banquet in the East Room of the Yates Hotel. Appropriate place cards and Latin menus gave this a Roman character. Mr. William Smith, Gamma Phi's first Prytanis, delivered an inaugural speech and Professor Davis addressed the group concerning the Fraternity and its ideals, including reminiscences of his own initiation into Gamma Chapter.

Gamma Phi Chapter was organized by Professor Davis, who has been interested in founding a chapter on the campus at Le Moyne College since his appointment to the faculty. The members were chosen from the Le Moyne College Classical Club, which was founded in 1949. Since 1953 the Club has included among its activities the publication of a quarterly entitled PHI OMEGA SIGMA, in which are printed the best papers, verse translations, and other compositions of the students in the Department of Classical Languages. At present the circulation of the quarterly is about five hundred and the chief subscribers are members of the college community.

Le Moyne College traces its history to 1941, when, in response to an invitation of the Most Reverend Walter A. Foery, Bishop of Syracuse, the authorities of the New York Province of the Society of Jesus began to plan for the opening of a new college in Syracuse. The first Jesuit "pioneers" came in 1945 and offered courses on an undergraduate level. Unlike most Jesuit institutions of higher learning Le Moyne College was coeducational from its beginning. The Regents of the



Administration Building, Le Moyne College

University of the State of New York granted the provisional charter to the college on February 15, 1946, and the absolute charter was granted by the same Board on May 18-19, 1950. The first classes were held in a building denominated Le Moyne Hall, opposite the Cathedral of the Immaculate Conception but in 1948 classes were transferred to the new buildings on the present campus on Le Moyne Heights and from there the first class was graduated in 1951. The faculty of the College is made up equally of Jesuits and lay professors. An ambitious building program is now under way and provides for the construction of new classroom buildings, a student union and cultural center, a gymnasium, and an enlargement of the present library.

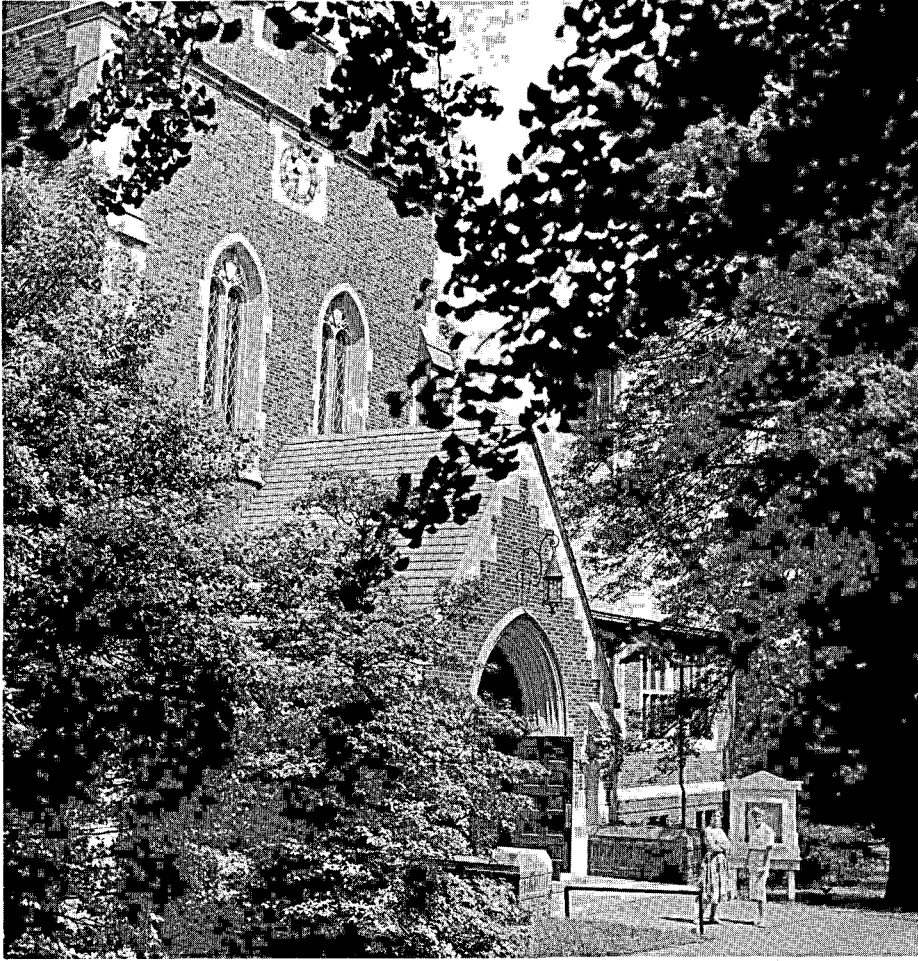
Le Moyne College is an integral unit of an international educational system which is represented in the United States by twenty-eight colleges and universities. The name Le Moyne was

appropriately chosen to commemorate the missionary activities of a French Jesuit, Father Simon Le Moyne, who during the seventeenth century labored among the Indians of the territory now comprising the city of Syracuse. He arrived in Canada in 1638, where he worked on the Huron Mission, and was noted as a master of the Indian languages, their customs, and traditions. He was the first Jesuit to penetrate among the Onondagas, the tribe now living in the Syracuse area, in 1654 and he continued his missionary labors until his death in 1665. (Material for the historical sketch of the College was provided by Professor Hugh H. Davis.)

Prytanis William Smith will be assisted by the following officers this year: Hyparchos Herbert Graf, Grammateus Arlene Robinson, Epistolographos Kathleen Reid, Chrysophylax Carl Lamondola, and Pyloros Bruce Nevins. Dr. Hugh Davis will be the faculty adviser.

Gamma Chi

OUR NEW CHAPTERS



Library, Lindenwood College

Gamma Chi Chapter of Eta Sigma Phi was installed at Lindenwood College in St. Charles, Missouri, on May 11, 1960. Professor Willam C. Korfmacher, Adviser of Beta Zeta Chapter at Saint Louis University and a member of our Board of Trustees, conducted the initiation ceremony, which was held at eight o'clock in the evening in the Little Chapel of the College Chapel. Seven members of Beta Zeta Chapter assisted Professor Korfmacher in the beautiful ceremony. A center piece of yellow chrysanthemums and purple iris was used to represent the colors of the Fraternity. Professor Hazel M. Toliver, Head of the Department of Classics at Lindenwood, accepted the charter in behalf of the new chapter and the four charter members. The new members of the chapter, the visitors from Beta Zeta Chapter, and members of the faculty, administration, and classes in the Department of Classics were guests at a reception in honor of the new initiates at which members of Pi Alpha Delta,

the Classics Club, served as hostesses.

Gamma Chi Chapter was organized by Professor Hazel M. Toliver, an alumna of Epsilon Chapter at the State University of Iowa. The members were chosen from Pi Alpha Delta, the Classics Club of Lindenwood, which was organized before 1930 and includes all students who are enrolled in the Department of Classics. The Club meets each month and its meetings include teas, discussions, and a Roman banquet as the last social event of the year. Gamma Chi Chapter will work in cooperation with Pi Alpha Delta.

Lindenwood College, the third oldest college for women in America, is a church-related College of Liberal Arts, whose Board of Directors is chosen by the Synod of Missouri, Presbyterian Church, U. S. A. The founder of the College was Mary Easton, daughter of the first postmaster of Saint Louis, who married George Champlain Sibley, a descendant of English gentry whose ancestors had settled in Massachusetts

in 1630. When Major Sibley was appointed Osage Indian Administrator, he and his young wife moved to their estate in Missouri on a summit which divides the Mississippi and Missouri rivers. Here in 1827 Mrs. Sibley opened her log cabin home in Linden Wood to a few students. By 1830 the schools was an academy and was chartered as Lindenwood Female College in 1853. In order to make permanent their dream of a college which could make its students "enlightened, accomplished and useful members of society" the Sibleys in 1856 endowed the school with their entire personal fortune. Today Lindenwood is at the western edge of Saint Charles, Missouri, an expanding city founded in 1769 by French fur traders and the first capital of the State of Missouri. Many well-preserved homes of a characteristic architecture of the early period may still be seen along the bluffs above the Missouri where the city rises. Daniel Boone was a pioneer of this section and Boone's Lick Trail began at the early ferry here to join with the Santa Fe Trail, which had been surveyed by Major Sibley. Metropolitan Saint Louis is only a few miles from Lindenwood and students of the College enjoy the cultural activities of the center of culture of this section of the Middle West as part of their "preparation for their role in our society, the single purpose of Lindenwood." Lindenwood emphasizes the values of a liberal education for women and its curriculum is planned "to help each student become a woman who thinks straight and expresses herself clearly." Because of a selected and limited enrollment of less than five hundred young ladies no student remains anonymous on the campus but has the maturing experience of leadership on the campus. (Material for the last paragraph was taken from *LEARNING AT LINDENWOOD, LINDENWOOD COLLEGE BULLETIN*, Vol. 131, No. 3, March 1958 and *LINDENWOOD COLLEGE BULLETIN*, Vol. 133, No. 6, September 1960.)

One of the new members of Gamma Chi Chapter is spending her junior year abroad and the other members are serving as a committee of officers. Dr. Hazel M. Toliver is the Adviser of the Chapter. In recent years the enrollment in the Department of Classics has increased regularly at Lindenwood and Gamma Chi Chapter intends to assist in encouraging further growth.

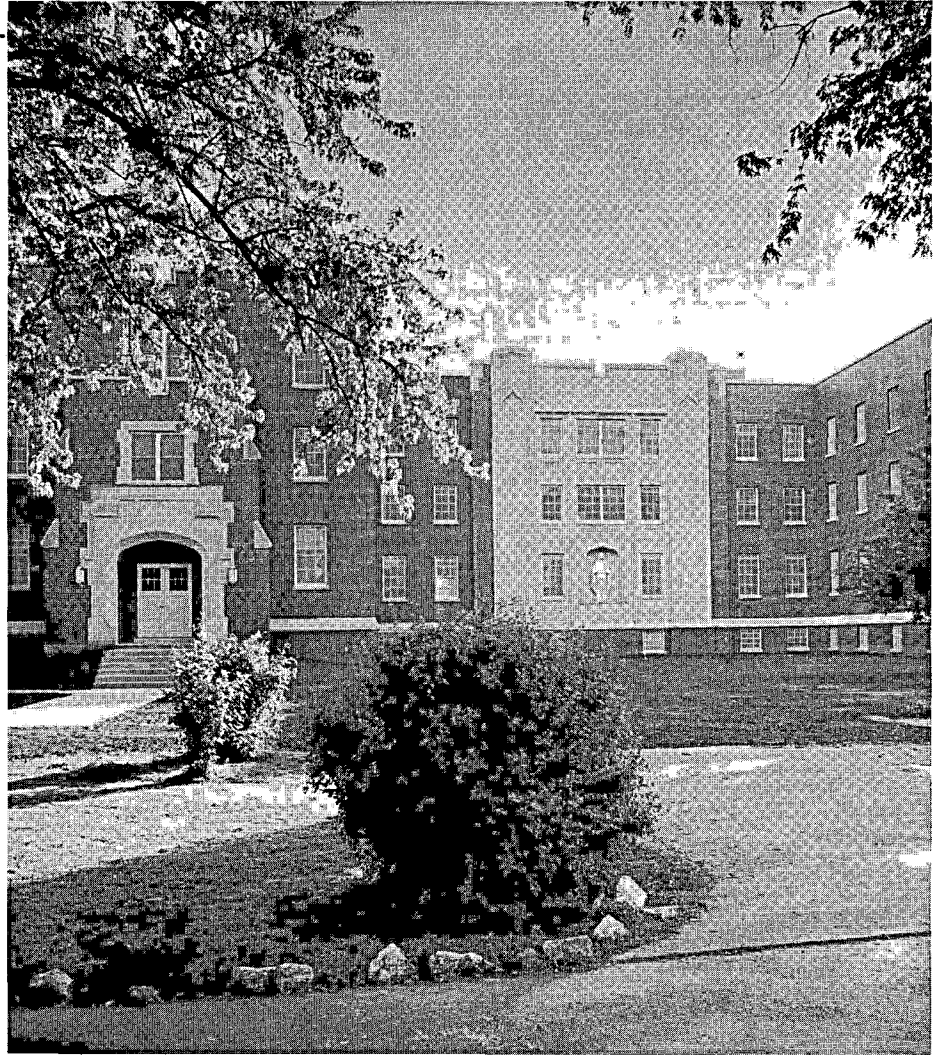
Gamma Psi

OUR NEW CHAPTERS

Gamma Psi Chapter of Eta Sigma Phi was installed at Ursuline College in Louisville, Kentucky, on May 11, 1960. Professor Robert J. Buck, Adviser of Tau Chapter at the University of Kentucky with the assistance of Professor Jonah W. D. Skiles, Head of the Department of Classics at the University of Kentucky and Miss Marlene Martin, Prytanis of Tau Chapter, installed the new chapter. Ten charter members and three honorary members were initiated in the dignified and beautiful ceremony.

Gamma Psi Chapter was organized under the guidance of Sister M. Alphonsine Lesousky, O. S. U., Chairman of the Department of Classic Languages at Ursuline College, and the outstanding leadership of Mrs. Paula Pendergrass, who became the first Prytanis of the Chapter. The members of the chapter are former members of ALMA, a Classical Club organized on the campus in 1959 to replace the former Scipionic Circle. ALMA (Art, Literature, Music Association) was chosen as the name of the Club because of its rich connotative value in Latin, for the classical tradition as exhibited in art, literature, and music through the ages has "nourished" man's culture. Last year the Club chose as its study the story of Prometheus and its use in art, literature, and music through the ages. Gamma Psi Chapter will study the story of Medea this year.

Ursuline College is a fully accredited Liberal Arts College for women located in one of the most attractive suburbs of Louisville, Kentucky. It is an heir and trustee of the Christian education for young women founded by Saint Angela, who in 1535 formed the first company of women religious teachers under the patronage of Saint Ursula. In 1877 the Ursuline community, stemming from the Paris house, purchased a small farm on what is now Lexington Road in Louisville and established a novitiate and a girls' academy. When the Motherhouse was transferred to this location, the community planned to expand its educational facilities, the first step in which was the establishment of Sacred Heart Junior College in 1921. As the educational needs expanded beyond the facilities of this college a senior college was established in 1938 and named Ursuline College. Since that date the college has expanded its facilities con-



Marian Hall, Ursuline College

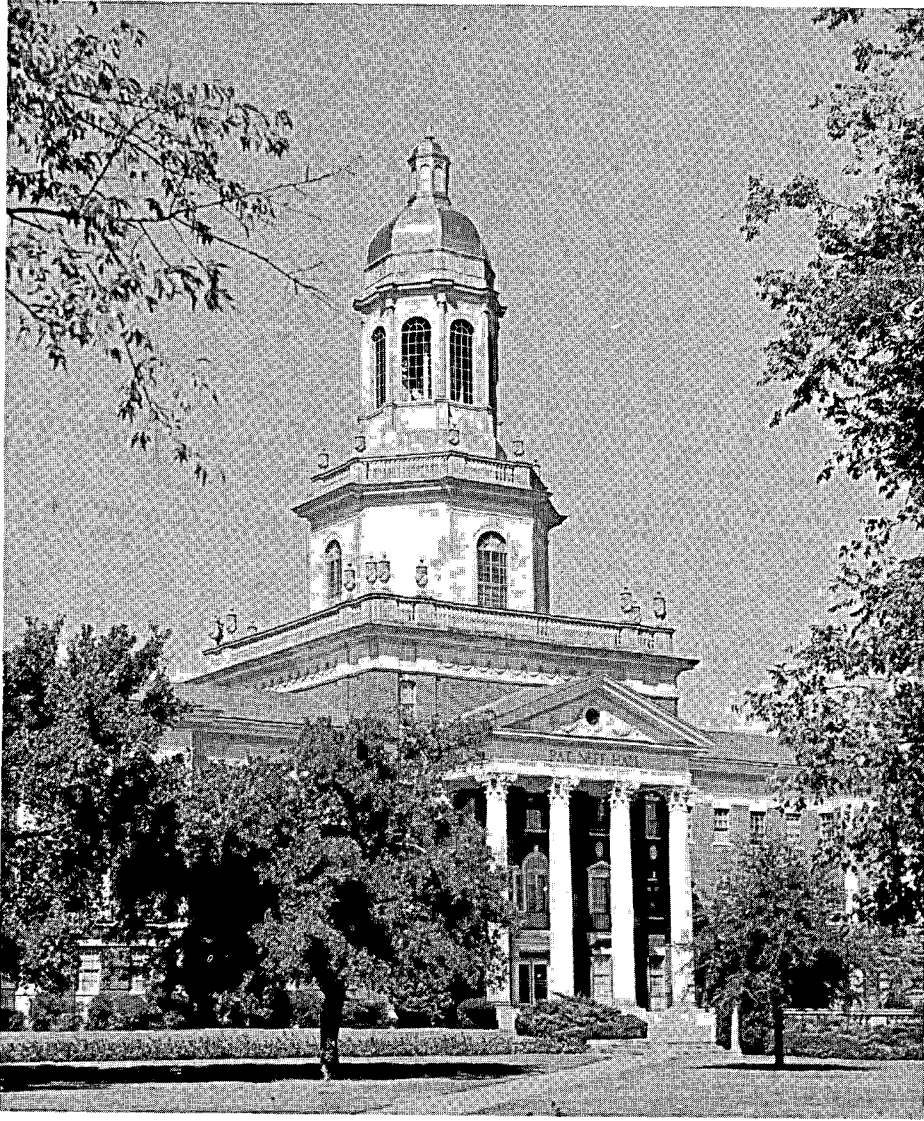
stanly on its spacious site in a beautifully wooded residential area of the city. Its nearness to the heart of the city gives the students an opportunity to share in the cultural activities and facilities of Louisville. Through its various courses and activities the College seeks to combine the traditions of four centuries of experience with the present trends of education and to produce graduates who will be a credit to the Church and to society by living according to the motto *Soli Deo Gloria*. Under the leadership of Sister Alphonsine Greek was restored to the college curriculum and Miss Mary Lois Wiegand, a charter member of Gamma Psi Chapter, is the first Greek major under the new curriculum. An article in the *Louisville Times* of May 21, 1959, pointed out that Ursuline College was the only one of the four colleges in Louisville which regularly scheduled courses in elementary Greek and gave

Sister Alphonsine credit for the renewed interest. It is only natural that she should be a strong exponent of the Classics inasmuch as her father has taught Classics at Saint Marys College, Kentucky, for forty-eight years and her brother, a priest, is also a teacher of Classics. When Gamma Psi Chapter was installed, fifty-five of the almost four hundred and fifty students in the College were enrolled in classes in the Department of Classical Languages. (Information concerning the history of Ursuline College was taken from *BULLETIN OF URSULINE COLLEGE*, Vol. 20, No. 1.)

The activities of Gamma Psi Chapter for this academic year are under the direction of Prytanis Paula Pendergrass. Other officers of the chapter are Hyparchos Mary Lois Wiegand, Grammateus Sandra Grasmick, and Chryso-phylax Noreen Hayes. Sister M. Alphonsine is the Adviser of the chapter.

Gamma Omega

OUR NEW CHAPTERS



Pat Neff Hall, Administration Building, Baylor University

Gamma Omega Chapter of Eta Sigma Phi was installed at Baylor University, Waco, Texas, on May 13, 1960. The initiation of the charter members and installation of the new chapter were conducted by Mr. Stephen Winstett, Prytanis of Gamma Sigma Chapter at the University of Texas and a group of members from that chapter. Sixteen charter members were initiated and three honorary members from the faculty, including Professor Roy F. Butler, Head of the Department of Classics at Baylor University.

Gamma Omega Chapter is made up of members of a Classics Club, which was founded at Baylor University in 1959. Miss Ellen Andrews, a senior student of Classics, was President of the Club and carried out the organization of the new chapter most efficiently.

Professor Butler was faculty adviser of the Club, which last year studied the history of the Graeco-Roman world.

Baylor University was founded by Judge R. E. B. Baylor, the Reverend James Huckins and the Reverend William Milton Tryon, three pioneer missionaries who organized an Education Society in the Texas Union Baptist Association in 1841. A charter was granted by the Congress of the Republic of Texas on February 1, 1845 and in 1846 a preparatory department was opened at Independence, Texas, with one teacher and twenty-four students, male and female. The following year the new President, who came from Georgia, organized a collegiate department and two years later added lectures in law. The first degrees were granted in 1854. The new institution

and Waco University were consolidated and rechartered as Baylor University at Waco in 1886 and within a year the University was established on its present campus at Waco. The University's greatest expansion prior to recent years was under the presidency of Dr. Brooks between the years 1902 and 1931 when the schools of education, law, business and music were established and the following professional schools in Dallas were added to the University: College of Medicine and School of Nursing, School of Pharmacy, and College of Dentistry. Today the main campus of the University is still in Waco but the College of Dentistry is at Dallas and the College of Medicine is at Houston, where it was established as one of the first units of the extensive Houston Medical Center. A Graduate Research Institute is located at Dallas with affiliated units in San Antonio. The Armstrong Browning Library of Baylor University is said to contain more Browniana than any other library in the world and the Texas History Collection is invaluable for research in the history of Texas and of the Baptist Church in Texas. Since 1948 the University has made unprecedented growth in both capital assets and academic standards. In addition to the M. A. the Graduate School now confers the Ph.D. Because of its founding by members of the Baptist church and affiliation with the Baptist General Convention of Texas, Baylor University holds "steadfastly to its basic educational philosophy of blending Christian understanding into classroom and laboratory study" and its "paramount, all-inclusive aim is to prepare students for effective living in a democratic society." In line with its "ever-expanding service to the world, its original motto *Pro Ecclesia, Pro Texana* is now being interpreted *Pro Deo, Pro Patria, Pro Mundo*." Four hundred of its approximately six thousand students on the Waco campus are enrolled in the Department of Classics. (Material for the last paragraph was taken from THE BAYLOR BULLETIN, Vol. LXII, No. 2, June, 1959.)

Mr. David Wilson was selected to serve as Prytanis of *Gamma Omega Chapter* during its first year. Other members of the executive council are Hyparchos Sue Harris, Grammateus Claire Lynn Roberts, and Chrysophylax Gale Thaxton. Dr. Roy Butler is *Gamma Omega's* Adviser.

AMONG THE CHAPTERS

PI

Birmingham-Southern College

Pi Chapter began its activities for the new academic year with an organization meeting early in October. Mrs. Helen Mabry was selected to be the Prytanis of the chapter for the year and has planned a series of lectures by members of the faculty on Greek and Roman authors.

BETA ZETA

Saint Louis University

Reverend Francis J. Guentner, S. J., is the new Adviser of Beta Zeta Chapter. We welcome him in his new capacity and look forward to working with him. Since the sudden death of Father Hunleth last spring, Beta Zeta Chapter has been without an adviser and Professor Korfmacher has been looking after the chapter. The chapter will hold an organization meeting on October 30 at which Father Hawthorn will give an illustrated lecture of his travels in Italy. Prytanis Mary Weis is assisting Father Guentner in the reorganization of the chapter.

BETA KAPPA

The College of Notre Dame
of Maryland

Sister Therese Marie, Prytanis of Beta Kappa Chapter, reports that seven new members were initiated at the May meeting of the chapter. The new Prytanis of the chapter for the present academic year will be Marcia Lewis, who will be assisted by Grammateus Joan Thomas. The new initiates at the May meeting were guests at a buffet supper after which there was a program on the Muses.

BETA LAMBDA

Marymount College

The first meeting of the new academic year was an organizational meeting on September 21. Sister Marie Antoinette, Adviser of Beta Lambda Chapter, has informed the National

Office that there are thirteen members in the chapter at present and a new member, Sheila Avery, will be initiated in October. Officers for the new year are Prytanis Margaret Ballou, Hyparchos Janet Hench, and Grammateus-Chrysyphylax Glenda Lee Persigehl.

BETA OMICRON

Mount Mary College

Sister Mary Dorothea, Adviser of Beta Omicron Chapter, sent the National Office a copy of the very attractive folder which the Department of Classics at Mount Mary College has issued to publicize the study of the Classics at the College. Entitled "Spotlight on Classical Studies," this is truly a beautiful brochure with illustrations in color. Monica Josten in Grecian costume is the "cover girl" and there is a very life-like picture of Sister Mary Dorothea before a blackboard filled with a passage of Greek. Eta Sigma Phi is given a very prominent place in the folder and so receives some very excellent publicity. We congratulate the Department on this fine propaganda for Greek and Latin. Monica Josten will be studying at the University of Toronto this year on a fellowship.

GAMMA ALPHA

Indiana State Teachers College

Gamma Alpha Chapter again participated in the homecoming activities of the College and entered a float which depicted Charon ferrying to the underworld the souls of the defeated Butler Bulldogs. Professor Gertrude Ewing, Adviser of the Chapter, failed to say whether the prediction of the float was correct or whether the chapter won a prize. Gamma Alpha Chapter held a breakfast with the Modern Language Club also. The chapter held a get-acquainted dinner on October 16 in honor of the new members of the Department of Latin who promise to make good Eta Sigma Phi material for the future.

GAMMA ETA

Louisiana College

Gamma Eta Chapter, which was reorganized last year, awarded two bronze Eta Sigma Phi medals on May 4 to students of Bolton High School, Alexandria, Louisiana. It is a pleasure to report that Gamma Eta is cooperating in our effort to encourage the

study of Latin in high school through our medals. Professor Nikolai A. Alexandrenko, Adviser of Gamma Eta Chapter, reports that the chapter is making plans for an active year.

GAMMA THETA

Georgetown College

Gamma Theta Chapter made plans for a good new year before the end of last year. New officers were chosen, monthly meetings were set up, and an interested and eager program chairman was elected. Mrs. Ruth F. Longacre, Adviser of the Chapter who was initiated as an honorary member on May 7, has placed herself in the debt of all members of our Fraternity by reorganizing Gamma Theta Chapter and leading it to active participation in the work of Eta Sigma Phi.

ANNUAL REPORT Eta Sigma Phi Medal Fund

Cash on hand, August 31,
1959\$213.80

RECEIPTS:

Sale of Large Silver
Medals
(76 @ \$3.75).....\$285.00

Sale of Small Silver
Medals
(146 @ \$1.25).....183.00

Sale of Bronze
Medals
(219 @ \$1.25)..... 273.75

Overpayments and
air mail 5.53

TOTAL RECEIPTS\$747.28

TOTAL CASH AND
RECEIPTS\$961.08

DISBURSEMENTS:

Payment to Medallic
Art Co. for
medals\$599.88

Advertising 27.75
Refunds 4.25

Transfer to Endow-
ment Fund 170.00

TOTAL DISBURSE-
MENTS\$801.88

Cash on hand, August 31,
1960\$159.20

Medals in custody of Medallic
Art Co. but paid for:

14 Large Silver
Medals @ \$3.28.....\$45.92

22 Small Silver
Medals @ \$1.11..... 24.20

20 Bronze Med-
als @ \$.80 16.00

Inventories\$86.12

SCHOLARSHIP

(Continued from Page 1)

One scholarship will be for study at the Summer Session of the American Academy in Rome and will have a value of \$450.00. Through the cooperation of the Committee on Classical Studies of the Academy the tuition of \$100.00 will be remitted and the scholarship will carry a stipend of \$350.00.

The other scholarship will be for study at the Summer Session of the American School of Classical Studies at Athens and will have a value of \$550.00. The Managing Committee of the School will remit the \$250.00 tuition and the scholarship will carry a stipend of \$300.00.

Alumni of Eta Sigma Phi who have received a Bachelor's degree since January 1, 1956, or shall have received it in or before June, 1961, and who have not received a doctoral degree are eligible to apply for the scholarship.

Our scholarship program is most significant for our Fraternity and needs the cooperation of every chapter. Your editor urges every Adviser and Prytanis to bring the scholarships to the attention of alumni and graduating seniors who are eligible to apply. We have had excellent scholars at the

schools in the past but the selection has been made from a comparatively small number of applicants. When the award has been made, eligible alumni frequently are sorry to learn that they did not have an opportunity to apply because the scholarship was not brought to their attention. Your cooperation in publicizing the scholarships is urgently requested.

Information concerning the scholarships and application blanks are available from the Executive Secretary. Application blanks, when completed, along with photographs and letters of recommendation are to be sent to Professor Regenos before January 31, 1961.

Awards in the 1960 Contests

The Committee on Contests of Eta Sigma Phi, under the chairmanship of Professor William C. Korfmacher, announced the winners of the contests for 1960 on March 24. There were 195 entrants in all of the contests. The contest winners are listed below in order for each contest:

Fifteenth Annual Essay Contest (thirty-four entrants from twenty-four schools): George Weckman, a member of Alpha Rho Chapter of Eta Sigma

Phi, Muhlenberg College, Allentown, Pennsylvania; Thomas J. Kasper, John Carroll University, Cleveland, Ohio; Sister Mary Richelle, S.S.N.D., Notre Dame College, St. Louis, Missouri; John M. Greaney, Holy Cross College, Worcester, Massachusetts; Kenneth Allen Seib, Ashland College, Ashland, Ohio; Sister M. Francis of Assisi, S.S.N.D., Notre Dame College, St. Louis.

Eleventh Annual Greek Translation Contest (sixty-one entrants from thirty schools): John Langan, Colombiere College, Clarkston, Michigan; Arthur Victor Guarino, Holy Cross College, Worcester, Massachusetts; John E. Mansfield, Colombiere College; Thomas G. Elliott, University College, Toronto, Ontario, Canada; David E. Hahm, Northwestern College, Watertown, Wisconsin; Donald B. Barrett, Holy Cross College.

Tenth Annual Satterfield Latin Translation Contest (one hundred entrants from forty-seven schools): Angel Victorina Elodie Van De Walle, University College, Toronto, Ontario, Canada; Gerald R. Grosh, S. J., Milford College, Milford, Ohio; Eugene M. O'Brien, Colombiere College, Clarkston, Wisconsin.

PRICE LIST OF ETA SIGMA PHI INSIGNIA

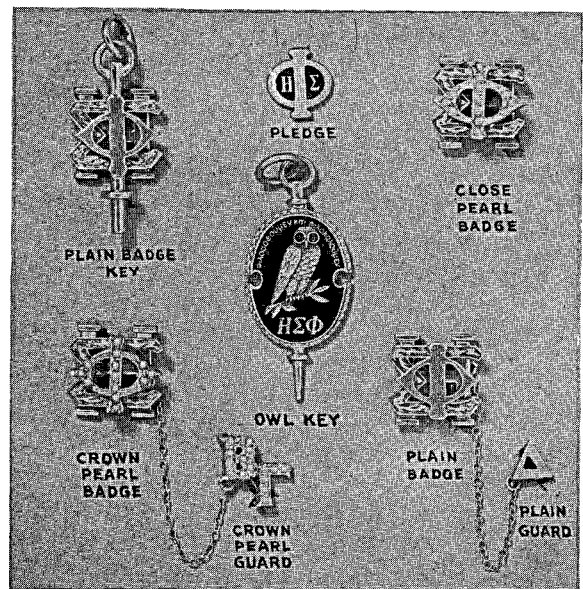
Plain badge, 10K yellow gold.....	\$6.25
Plain badge, 1/10 10K yellow gold.....	4.00
Close set pearl badge, 10K yellow gold.....	9.50
Crown set pearl badge, 10K yellow gold.....	13.50
Owl Key, 10K yellow gold (Alternate Member Key).....	7.25
Owl Key, gold plated.....	4.50
Owl Keypin, gold plated.....	5.50
Official plain badge key, 10K yellow gold.....	6.50
Official plain badge key, 10K white gold.....	8.50
Pledge pin, gold plated.....	1.00
Pledge button, gold plated.....	.75

GUARD PINS:

	Single Letter	Double Letter
Plain, 10K yellow gold.....	\$2.75	\$4.25
Close set pearl, 10K yellow gold.....	5.50	9.25
Crown set pearl, 10K yellow gold.....	7.75	14.00

TAXES: Add 10% Federal Tax and any State Tax in effect to the prices listed.

REGULATIONS: All orders for insignia must be placed by your Chapter Officer.



L. G. Balfour Company
 ATTLEBORO, MASSACHUSETTS

An Announcement of Five Contest

The Committee on Contests of Eta Sigma Phi, national honorary fraternity for students of Latin and Greek, announces the following Contests for 1960-1961:

(1) SIXTEENTH ANNUAL ESSAY CONTEST

Subject: "The Essential Unity of the AENEID." It is expected that the contestant will look at the twelve books of Vergil's AENEID and discover what are the bonds of unity in the epic.

All papers must be original. Format, mode of citation, and the like, must be uniform within the paper and quotations must be duly credited. Entries must be typewritten, in double space, on one side only of letter-size typewriting paper. The maximum length is 2250 words.

(2) FIRST ANNUAL GREEK PROSE COMPOSITION CONTEST

The contest will consist of the translation of a passage of English into Greek. This contest is intended for advanced students of Greek who are in their third or fourth year of college Greek.

(3) TWELFTH ANNUAL GREEK TRANSLATION CONTEST

The contest will consist of the sight translation of a passage in Greek which is considered within the comprehension of students in the second year or above of the study of Greek.

(4) ELEVENTH ANNUAL SATTERFIELD LATIN TRANSLATION CONTEST

The contest will consist of the sight translation of a passage of Latin chosen in reference to students who have had two or more years of Latin in high school (or the equivalent in college) and at least one or more semesters in college.

Eligibility: The above contests are open to college undergraduates who are enrolled at the time of participation in a course in Latin and/or Greek in an approved college or university in the United States or Canada and are candidates for the degree of Bachelor of Arts.

Written notice of a desire to participate, postmarked not later than February 10, 1961, must be sent to the Executive Secretary. Materials for Contests Two, Three, and Four will be mailed by him in time for the contests to be administered simultaneously in all competing schools as follows: Greek Translation Contest on February 21, Satterfield Latin Translation Contest on February 23, and Greek Prose Composition Contest on February 27. Contest papers in all of the above contests are to be forwarded to the Executive Secretary and must be postmarked not later than March 1, 1961. Each paper must be accompanied by an identification page, which will be supplied in advance of the contest. There is a limit of three papers from any one school in the Essay Contest, Greek Translation Contest, and Satterfield Latin Translation Contest.

Prizes in the Essay Contest, Greek Prose Composition Contest, and Greek Translation Contest are as follows: first, \$50.00; second, \$35.00; third, \$25.00; fourth, \$17.50; fifth, \$12.50; sixth, \$10.00. In the Satterfield Latin Translation Contest the prizes are as follows: first, \$25.00; second, \$15.00; third, \$10.00.

Decision as to place in the various contests will be made by a Board of Judges at the State University of Iowa, who will identify the papers by code designation only.

(5) CHAPTER FOREIGN LANGUAGE CENSUS

This contest will consist in a report of foreign language credits held by college undergraduates in Greek, Latin, Sanskrit, French, and German. The contest is among *chapters* of Eta Sigma Phi Fraternity and reports will be accepted only from college undergraduates who are chapter members and are attending the college or university to which the chapter belongs. A chapter may send as many entries as it wishes but only one award will be made to any one chapter. The prize for the chapter reporting a student with the highest number of points is \$25.00; second highest, \$15.00; third, \$10.00.

The Committee on Contests of Eta Sigma Phi Fraternity,
William C. Korfmacher, St. Louis University, Chairman;
Gertrude Ewing, Indiana State Teachers College; Paul R.
Murphy, Ohio University

Address all communications concerning the contests to the Executive Secretary, Professor H. R. Butts, Birmingham-Southern College, Birmingham 4, Alabama.