

# THE NUNTIUS

Official Publication of Eta Sigma Phi, Inc., National Honorary Classical Fraternity

Volume 27

November 15, 1952

Number 1



National President Parham Williams, Jr.

## PRESIDENT WILLIAMS ADDRESSES MEMBERSHIP OF ETA SIGMA IN ANNUAL MESSAGE

The following is the text of the annual letter from the National President of Eta Sigma Phi:

"Fellow Members of ETA SIGMA PHI:

"As we begin a new year of scholastic endeavor, a year which holds forth much to challenge our thinking and our labors, may I extend to all of you my greetings and my heartfelt wish for your success.

"The Twenty-fourth National Convention of ETA SIGMA PHI, held last April at Indiana University, represented a significant milestone in the growth of our fraternity. For there, we convened for the first time with the eight newly installed chapters, four of which the remaining active chapters of Sigma Pi Rho, had come in as a group.

"The amendment to Article XIII, Section 2 of the National Constitution, providing 'that the initiation fee be increased to a sum not to exceed five dollars (\$5.00)', was passed at the Convention, and should result in a marked strengthening of our general financial condition.

"Thus, I believe the twenty-fourth annual meeting, composed of the best efforts of the nineteen represented chapters, constituted a most successful Convention.

"With our achievements of the past year serving as stimuli to our efforts, we must continue to bend our energy and our thoughts to the fulfillment of the task which confronts us. As students of the Classics, it is our duty and our privilege to portray to others that dynamic union which binds

## PROFESSOR KORFMACHER ANNOUNCES ETA SIGMA PHI CONTESTS FOR 1953

For 1952-1953, Eta Sigma Phi, national undergraduate honorary classical fraternity, announces the following four Contests. Further information may be had from the Chairman of Contests, W. C. Korfmacher, Saint Louis University, 3650 Lindell Boulevard, Saint Louis 8, Missouri.

### 1. Eighth Annual Essay Contest:

(a) Subject: "The place of Greek in Today's College Curriculum."

(b) Eligibility: The Contest is open to undergraduates enrolled at the time of submission of the paper in a course of Greek or Latin in an approved college or university in the United States or Canada.

(c) Identification: Each paper is to be accompanied by an identification page, available in advance from the Chairman of Contests, giving necessary information and including a testimonial from a member of the classics faculty at the contestant's school as to the contestant's right to participate and his fair and original preparation of the paper. There is a limit of five papers from any one school.

(d) Qualifications: All papers must be original. Because of the nature of the subject, sincerity and definiteness will be particularly considered. Quotations must be duly credited. Format, mode of citation, and the like must be uniform within the paper. Entries must be typewritten, in double space, on one side only of normal-sized typewriter paper. The maximum length is 2,250 words.

(e) Date: Papers must be postmarked not later than March 3, 1953, and must be mailed

(Cont'd. to page 3 - col. 1).

our Western Civilization so irrevocably to the culture and the intellect that was Greece and Rome.

"Ours is a rare and enviable opportunity; may we not fail to capitalize thereon.

"It is my sincere desire that each of you will think seriously and hopefully about the activities of ETA SIGMA PHI for the coming year. And I trust that you will ever feel free to contact me or your other officers concerning your projects, problems, or ideas. We are at your service and wish to assist you in any way possible.

"Until I see you at the Twenty-fifth National Convention at Agnes Scott College, Decatur, Ga., in April, 1953, I remain,

"Fraternally,  
Parham Williams"

NATIONAL PRESIDENT PLANS  
TO ENTER LEGAL PROFESSION

Parham Williams, Jr., National President of Eta Sigma Phi, whose photograph and letter to the membership appear on page one of this issue, is now enrolled in his first year of Law School at the University of Mississippi. In his pre-legal courses his specialties were, in addition to the Classics, History and English.

Parham was born in Lexington, Mississippi, June 8, 1931. After graduation from the Lexington High School, he enrolled at the University of Mississippi. Upon graduation from Law School he will accept a commission in the Air Force. After his return to civilian life he plans to take up the practice of law.

His numbers among his hobbies hunting, fishing, and chess. He is especially hopeful that this will be a year of marked activity in all the chapters of Eta Sigma Phi, and that he will have the pleasure of seeing a large representation of fellow-members of the Fraternity at the Twenty-Fifth National Convention at Agnes Scott College, April 10 and 11, 1953.

PROFESSOR WILLIS AWARDED  
FORD FOUNDATION FELLOWSHIP

Professor William H. Willis, head of the Department of Classics, University of Mississippi, and a member of the Board of Trustees of Eta Sigma Phi, is one of 246 college teachers awarded fellowships for the 1952-53 school year by the Ford Foundation Fund for the Advancement of Education. Of the 246 recipients, only five are classicists. Professor Willis will use his grant to study at Harvard University, taking a few courses in Greek Papyrology, textual and literary criticism, and comparative grammar, and working in the Widener Library. Our congratulations to Professor Willis for this well deserved honor.

PROFESSOR GEER ELECTED  
PRESIDENT OF CAMWS

Professor Russel M. Geer, Tulane University, was elected President of the Classical Association of the Middle West and South, at the Forty-eighth Annual Meeting held in Toronto, Ontario, April 17-19. He succeeds Professor William C. Korfmacher. Next year's meeting will be held in Cincinnati, Ohio, at the Easter week end, April 2-4.

NEW CHAPTERS AT THE UNIVERSITY OF  
WISCONSIN AND ALBION COLLEGEGAMMA EPSILON

Gamma Epsilon Chapter was installed at the University of Wisconsin on May 21, 1952. Seven members of the Gamma Gamma Chapter (Wisconsin State College), headed by their Faculty

Adviser, Miss Ortha L. Wilner, drove to Madison and officiated at the ceremonies. Father Gauss from Beta Sigma Chapter (Marquette University) was also able to attend, and was warmly welcomed. The visitors were graciously entertained at a pre-installation dinner at the University's attractive Union Building.

There were thirty-one members initiated (five honorary, thirteen associate, and thirteen active). Honorary members from the Faculty were Messrs. Agard, Mackendrick, Fowler, Howe, and Miss Milham. Professor Heironymous is a member from Beta Chapter (Northwestern University).

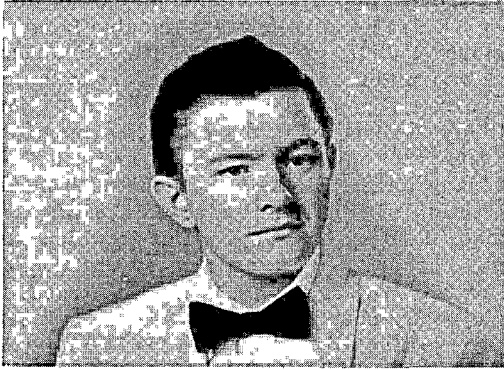
Miss Wilner expressed the pleasure of her own chapter in having been given the opportunity to install the new chapter, and commented as follows: "The whole group was very gracious in entertaining us, and is very enthusiastic and active. The new chapter will most certainly contribute much to the work of Eta Sigma Phi, and equally certainly gain much from this association. Particularly, Mr. Reynolds, the President, and Mr. Evjen, Chairman of the Installation Committee, have shown enthusiastic interest and ability."

Mr. Harold D. Evjen, who was largely responsible for the negotiations leading to the installation of the new chapter, anticipates a large and active chapter and says that plans are already being made for a yearly Wisconsin state convention, high school tours, slide and lecture service, and also some social activities. The Fraternity as a whole shares with the new chapter the hope that their association in Eta Sigma Phi will be mutually pleasant and profitable. Our hearty congratulations to Gamma Epsilon Chapter, the fifth active chapter of Eta Sigma Phi in the state of Wisconsin.

GAMMA ZETA

Gamma Zeta Chapter was installed at Albion College, Albion, Michigan, on May 25, 1952. Professor Fred S. Dunham of the University of Michigan officiated, in a way which Dr. Mary E. McKinney, Professor of Classics at Albion College, described as beautiful and impressive. The new chapter entertained for Professor Dunham with a reception and tea, at which the Dean of the college and his wife were guests. Fourteen students were initiated as charter members and two as associate members. Miss McKinney says that they all seemed very happy, proud, and inspired, that they really believe in what Eta Sigma Phi stands for and proposes to do.

Prospects for the new chapter are very bright indeed, for the Classics Department at Albion College has had an active classical club for many years. The Fraternity may rest assured that, under the capable leadership of Miss McKinney, the new chapter will make a worthy contribution to classical studies on the Albion campus, and add strength to the whole organization. Congratulations and best wishes to our newest chapter, Gamma Zeta.



*National Treasurer John Lee, Jr.*

NATIONAL TREASURER PLANS  
TEACHING CAREER

National Treasurer John M. Lee, Jr., is a junior in Tulane University, where he is majoring in Mathematics and minoring in Chemistry and Education. In addition he is electing enough Latin to meet the state teaching requirements in that subject. After graduation he plans to teach in the Secondary Schools of New Orleans.

John was born March 19, 1933, in New Orleans, Louisiana. His early education was received in the New Orleans Public Schools. At Tulane he is an honor student, yet finds time for many outside interests. He plays the French horn and cornet, collects stamps, assists with a scout troop, and enjoys opera and music of all kinds. He is serving this year as President of the Alpha Chi Chapter.

*(Cont'd. from page 1, col. 2)*

directly to the Chairman of Contests.

(f) Decision: Decision as to excellence will be made by a Board of Judges, who will identify the papers by code designation only. In its full award, the Contest will depend on a minimum of fifteen entries from fifteen different institutions.

(g) Prizes: First, \$50.00; second, \$35.00; third, \$25.00; fourth, \$17.50; fifth, \$12.50; sixth, \$10.00.

2. Fourth Annual Greek Translation Contest:

(a) The Contest is open to undergraduates enrolled at the time of participation in a course in Greek language in an approved college or university in the United States or Canada. The passage for sight translation from Greek will be chosen with an eye to students in the second year of the language or above. There is a limit of five entries from any one school. The Contest will be held simultaneously in the participating schools on March 3, 1953, for two hours. The Contest, in its full award, will depend on a minimum of fifteen entries from fifteen different institutions. Decision as to excellence will be made by an expert Judge, who will identify the papers by code designation only.

(b) Notification of a desire to participate must be sent in writing, not later than February

17, 1953, to the Chairman of Contests. Each entry must be accompanied by an identification page, as in the Essay Contest. Papers submitted must be postmarked not later than March 17, 1953, and must be mailed directly to the Chairman of Contests. Prizes will be offered as in the Essay Contest, except that any participant placing in both Contests will receive an added award equal to the one he wins in the Greek Translation Contest.

3. Third Annual Satterfield Latin Translation Contest: The Contest is open to undergraduates enrolled at the time of participation in an approved college or university in the United States or Canada. It consists in an original English version of a passage to be supplied on request by the Chairman of Contests. There is a limit of five entries from any one school. Decision as to excellence will be made by an expert Judge, who will identify the papers by code designation only.

(b) Notification of a desire to participate must be sent in writing, not later than February 17, 1953, to the Chairman of Contests. Each entry must be accompanied by an identification page, as in the Essay Contest. Papers must be postmarked not later than March 3, 1953, and must be mailed directly to the Chairman of Contests. A prize of \$25.00 will be given for the best paper.

4. Second Chapter Foreign Language Census: This Contest is open only to Chapters of Eta Sigma Phi. It will consist in a report of foreign language credits held by individual undergraduates, and these credits will be totalled (with weightings in favor of Greek, Latin, Sanskrit, and Hebrew) according to a system to be sent, on request, by the Chairman of Contests. Reports must be postmarked not later than March 3, 1953, and must be mailed directly to the Chairman of Contests. A Chapter may send as many entries as it wishes, but not more than one award will be given to a Chapter. Awards will be as follows: for the Chapter reporting a student with the highest number of points, \$25.00; the second, \$15.00; the third, \$10.00.

RESULTS IN THE THIRD ANNUAL  
GREEK TRANSLATION CONTEST

In the Third Annual Greek Translation Contest there were fifty-three entrants from twenty different schools. Winners were the following: first place, John J. Keaney, Boston College; second, Donald R. Laing, Washington and Jefferson College; third, Charles R. Beye, State University of Iowa; fourth, Paul A. Kelley, Boston College; fifth, Panos G. Gregoriou, University of Richmond; sixth, Michael J. Browne, Fordham University. The judge was Professor Christopher G. Brouzas, West Virginia University.

The results of the other contests were announced in the May number of The Nuntius.

\* \* \* \* \*

Attractive Eta Sigma Phi pins and keys may be ordered through chapter officers. Identify yourself as a member of Eta Sigma Phi by wearing a pin or a key.

# THE NUNTIUS

Vol. 27      November 15, 1952      No. 1

Published four times during the academic year: November 15, January 15, March 15, and May 15. Sent without charge to all active members of Eta Sigma Phi, for each year in which dues are paid. Price to others: \$1.50 per year. All communications regarding publication or business should be addressed to *The Editor*: Graydon W. Regenos, Tulane University, New Orleans 18, Louisiana.

Official Publication of Eta Sigma Phi, National Honorary Classical Fraternity, Founded in 1914, Nationalized in 1924, Incorporated under the Laws of the State of Illinois, June 20, 1927.

## OFFICERS

Parham Williams -- University of Mississippi  
University, Mississippi ..... *National President*

Lynn Casper -- Lawrence College,  
Appleton, Wisconsin ..... *National Vice-President*

Lois Rinsch -- Indiana State Teachers College,  
Terre Haute, Indiana ..... *National Secretary*

John M. Lee -- Tulane University,  
New Orleans, La. .... *National Treasurer*

## BOARD OF TRUSTEES

Professor Victor D. Hill (1955), Ohio University, Athens, Ohio, *Chairman*  
Professor Grace L. Beede (1953)  
University of South Dakota, Vermillion, South Dakota  
Professor Lillian B. Lawler (1955),  
Hunter College, New York 21, New York  
Professor H. Lloyd Stow (1954),  
Vanderbilt University, Nashville, Tennessee  
Professor William H. Willis (1953),  
University of Mississippi, University, Mississippi

## HONORARY PRESIDENT

Professor Gertrude Smith  
University of Chicago, Chicago 37, Illinois

## HONORARY EXECUTIVE SECRETARY

Professor William C. Korfmacher  
Saint Louis University, Saint Louis 8, Missouri

## EXECUTIVE SECRETARY

Professor Graydon W. Regenos,  
Tulane University, New Orleans 18, Louisiana

## FINANCING THE LOCAL CHAPTER

A frequent inquiry that comes to the Executive Secretary is the question of how a local chapter may be able to raise enough money for local needs, and especially to defray the expenses of a delegate to the National Convention.

The Executive Secretary is well aware of the fact that some chapters have only a few members and that it can become something of a burden for them to raise an adequate budget. In the case of such chapters it may be quite impossible to send a representative to the National Convention every year, or even every other year, desirable as that may be. However, in order to conform to the minimum requirements of the Constitution, which stipulates that each chapter shall be represented at least every sixth year, every chapter should be building a fund for this and other necessary expenses. Such a chapter should also take advantage of the opportunity to send delegates to those meetings which come nearest to its own campus, for an effort is made to rotate the meeting places from section to section.

A few suggestions gathered from the reports of various chapters, together with the writer's own experience in his own chapter, may be helpful in attempting to answer this question.

Perhaps the most common method of meeting expenses is by small assessments from each member. Faculty members, and the alumni members who maintain an active interest in the chapter, will be glad to contribute. This plan, if willingly agreed to by the group, is perhaps the easiest.

Many chapters raise money by such means as the selling of Christmas cards, bake sales, card parties, dances, etc. Programs to which admission is charged are sometimes presented. These and perhaps other devices can be successfully employed by chapter officers who have ingenuity and are willing to work hard.

Finally, we should like to point out that the traveling expenses to a convention need not be prohibitive. No one really needs to travel by air or take a Pullman! Many of the delegates to the Bloomington meeting, for instance, arrived by bus; others came by car, sharing expenses. And why not expect the delegate himself to bear a portion of his expenses? For after all, he will get far more personal pleasure and profit from the meeting than he can possibly take back with him to his chapter.

This is therefore an appeal for every chapter, no matter how small, to raise, in its own way, a budget which will be adequate for its financial needs.

## A NEW SERVICE TO INITIATES

Upon the suggestion of the Executive Secretary and with the unanimous approval of the Grand Executive Council, a new membership certificate has been prepared for all new members without extra charge. Following the receipt of the \$5.00 initiation fee, along with the name of the initiate and date of initiation, the Executive Secretary will promptly place an order for the certificates with our official jewelers, the L. G. Balfour Company, who will handle all details, such as the engraving of the individual's name, chapter, and date. Shipment is promised within two weeks and, in an emergency can be sooner, and even within twenty-four hours if necessary.

The certificate, or shingle, is 9 inches wide and 7-1/4 inches high, made of 100% rag content paper of the same type the government uses for permanent records. The new certificate is very attractive, and suitable for framing. All certificates will be carefully packed with ample reinforcement. Satisfactory delivery is guaranteed.

Chapters are urged to send in promptly the names of new members, along with the membership fee, in order that the certificates may be prepared and delivered without delay. Unfortunately, this arrangement applies only to those who will be initiated as active members beginning with this year. Others may, if they desire, have these certificates at cost (55 cents). There is still in stock a limited number of the smaller membership certificates which may be secured at the usual price of twenty-five cents each.

RETURN TO ITHACAA Review

Eyvind Johnson, Return to Ithaca, originally published in Swedish as Strandernas Svall and rendered into English by M. A. Michael, with a Preface by Mark Van Doren. London and New York, Thames and Hudson, 1952. Pp. ix, 474. \$4.00.

Return to Ithaca is the Odyssey of Homer brilliantly retold as a modern novel by Sweden's distinguished novelist, Eyvind Johnson, author of the great political novel, "The Krilon Group." As Mark Van Doren observes in the Preface of the book, "The novel is for now; the poem is for ever; and both gain by the company they keep." He would assure the reader that the novel is by no means a substitute for the original nor intended to make the Odyssey unnecessary or to cause it to become ignored.

The Return to Ithaca is a novel for mature readers, not a simplified children's story of the Odyssey. In the portrayal of character, psychoanalysis, arrangement of the different threads of a rather complicated plot, and in the narrative itself, the novel offers a fascinating story for the general reader and brings added delight to those who are familiar with the story as Homer tells it.

The classical student will find it interesting to compare Homer's literary art with modern literary conventions. He will note, for instance, the different method of character portrayal. In Homer he will recall that delineation of physical features is left almost entirely to the imagination of the reader. Homer's characters reveal themselves mainly through their own actions and words. Their physical appearance may be described by a mere epithet, or by some general observation such as that made by the old men on the wall concerning Helen's beauty. Johnson, on the other hand, relying freely on his own vivid imagination gives extended word pictures of the physical and emotional natures of his characters.

Homer's gods are also represented in a way suited to the demands of the modern reader. Divine intervention, although less obvious than it is in Homer, runs like a thread throughout the action of the novel, but with less justification, for human passions and the mind are in themselves sufficient motivating forces. The novel could conceivably exist without the gods, and suffer no essential loss in the development of plot. Their absence, however, would result in a distinct loss in Homeric flavor, and it is to the credit of Johnson that he put them in.

Johnson follows Homer's method of interweaving the various threads of the story until, with the return of Odysseus and Telemachus to Ithaca, they come together. The novel, however, follows a more consistent parallelism of action. For each chapter on the fortunes of Odysseus there is a corresponding chapter on the career either of Penelope or of Telemachus. The novelist has thus permitted himself to devote about as much attention to the scene at Ithaca as to Odys-

seus. Not until the fourth chapter from the end (chapter 28) do we find the beggar in the palace at Ithaca planning with his son and others the destruction of the suitors. This is skilled craftsmanship, for suspense is thereby maintained right up to the end of the book.

Return to Ithaca is a delightfully entertaining novel which gives new perspective to Homer's immortal story. I heartily commend it.

ALUMNI NEWS

JACK WOODHOUSE, Tau Chapter (University of Kentucky), in a letter to the editor dated September 22, expresses the hope that "the Fraternity will carry Eta Sigma Phi to new heights this year." Delegates to the Bloomington meeting will recall Jack's pleasant manner and remember the efficient way in which he conducted the business of the Convention.

JANE WRIGHT, Psi Chapter (Vanderbilt University), National Secretary of Eta Sigma Phi in 1951-52, is teaching this year in the Nashville schools.

DEWEY BUCKLEY, former President of Alpha Phi Chapter (Millsaps College), writes that he is now at the University of Illinois continuing graduate studies in the Classics toward his doctorate. He received his Master's degree in May from Tulane University, with a major in Latin.

ROY G. HUSS, former President of Alpha Chi Chapter (Tulane University) and a delegate to the 1948 National Convention in Saint Louis, paid a visit to the office of the editor on August 14. He is now working toward his doctor's degree in English at the University of Chicago. Roy left his subscription to The Nuntius, an indication that he is still keenly interested in Eta Sigma Phi.

HUNT COMER, last year's President of Alpha Chi Chapter (Tulane University), and a delegate to the Convention at Indiana University, is now taking work in the Theological Seminary at the University of the South, Sewanee, Tennessee. With him in an advanced course in Greek is LAYTON P. ZIMMER, President last year of Omega Chapter (College of William and Mary). "We are having a great time," Hunt says, "talking about Eta Sigma Phi and the Classics in general." Both are very thankful for their classical education and background.

REGINA GUNTHORPE, past Vice-President of Alpha Chi Chapter (Tulane University), and a delegate to the Twenty-second National Convention in Nashville, is teaching this year in the public schools of Mobile, Alabama.

CONSTANCE BARBARTINI, Beta Xi Chapter (Rosary College), has received a Fulbright award to study Latin and Italian at the University of Florence, Italy. BETTY COURTNEY of Beta Xi has a scholarship to work toward her Master's degree in Latin this year at the University of Missouri. Both students, June graduates, began their graduate studies this fall.

Alumni news from other chapters will be most welcome.

AMONG THE CHAPTERSALPHA DELTA, AGNES SCOTT COLLEGE

The Alpha Delta Chapter elected the following new officers at their annual banquet on April 17: President, Sarah Leathers; Vice-President, Alma Scoggins; Secretary, Nancy McLaurine Lee; Treasurer, Marian McElroy. The chapter is already making arrangements for the next National Convention which will be held on the Agnes Scott campus.

ALPHA OMICRON, LAWRENCE COLLEGE

Ann Leonard announces that Alpha Omicron Chapter initiated four new members at a meeting in the spring. At another meeting open to faculty and students, Miss Artha Gruehl, a transfer student from Stevens, gave an illustrated lecture on her travels in Italy and Sicily. The chapter gave a tea for third and fourth year Latin students from the Appleton High School. Iphigeneia in Tauris was presented in an effective manner by John Bloomer, Russell Hite, Joan Munson, and Barbara Zierke, as a group reading, with John Bloomer directing.

The chapter announces with deep regret the retirement of Miss Edna Wiegand and expresses its thanks and appreciation to her for the interest and assistance she has given over the years to Eta Sigma Phi on the Lawrence campus.

BETA ETA, WESTMINSTER

Joe Trower, President of Beta Eta Chapter, reports that his group will be smaller this year. Don Gish is serving as Secretary-Treasurer. Professor Robert G. Hoerber is Faculty Adviser.

BETA ZETA, SAINT LOUIS UNIVERSITY

Beta Zeta Chapter is looking forward to a very active year, which includes plans for slide lectures and discussions, writes Ireneanne Walter, Treasurer of the chapter. Twenty-three new members have been initiated. Other chapter officers are: President, Anton J. Pregaldin; Vice-President, Donn Riley; Secretary, Janet Ludwig; Sergeant-at-arms, Mary Reichmann. Rev. Marcus A. Haworth, S.J., is faculty adviser.

BETA KAPPA, COLLEGE OF NOTRE DAME OF MARYLAND

Beta Kappa Chapter held its last meeting of the 1951-52 session on May 14. The new officers elected and installed were: President, Sally Nelson, Secretary, Marie Giza; Treasurer, Geraldine Quinn; Sergeant-at-arms, Barbara Pentz.

Two members were pledged. The meeting was followed by a buffet supper and an entertainment along classical lines, a special feature of which was the first presentation of an Eta Sigma Phi song composed for Beta Kappa Chapter by the retiring President, Ann L. Connor. The chapter plans to use the song at its regular meetings.

Five of Beta Kappa's members graduated in June; they are now carrying on in the teaching field, and are expected to continue as associate members of Eta Sigma Phi. The first meeting of the fall was held on October 8.

BETA LAMBDA, MARYMOUNT COLLEGE

Sister Marie Antoinette, faculty adviser of Beta Lambda Chapter, reports that the chapter's membership is low but gives assurance that Beta Lambda will work to capacity. The members plan to participate with the Marymount Players in the production of the "Antigone" for early January. Chapter officers are: President, Lillian Beazley; Vice-President, Pat Allen; Secretary-Treasurer, Pat Norton.

BETA OMICRON, MOUNT MARY COLLEGE

Lenore Westfahl, Secretary of Beta Omicron Chapter, sends a list of the activities planned by the chapter for the early part of the year.

Mr. Aristotle Staver, the uncle of Helen Stavrakakis, a student in the Classics Department who recently came from Candia, Crete, will entertain the chapter with several reels of movies of Crete, especially of the ruins of the Palace of Knossos. Chapter members, she says, are also gaining useful information from Helen who lived in Athens for some time.

Rev. Raymond V. Schoder, S.J., gave an illustrated lecture at Mount Mary in the evening of October 22 on "The Journeys of Saint Paul." Other Milwaukee chapters were invited to this meeting. Refreshments were served after the lecture.

Plans are under way to inaugurate competition in the Milwaukee high schools for the Eta Sigma Phi medal, which the chapter will award in the spring.

In order to finance the work of the chapter during the current year a bake sale and card party will be sponsored by the chapter.

The other officers for the year are: President, Joan Bartelsen; Vice-President, Grace Gasiorowski; Second Vice-President, Dolores Wall; Corresponding Secretary, Shirley Coppersmith; Sergeant-at-arms, Joan Lehman. Sister Mary Dorothea, S.S.N.D., is Faculty Adviser.

BETA TAU, GEORGETOWN UNIVERSITY

Rev. John S. Creaghan, S.J., in a letter of June 12, reported the initiation of ten new members into Beta Tau Chapter. Father Creaghan will be teaching Latin and Greek during this year to the young Jesuits in their philosophical studies at Bellarmine College, Plattsburg, New York. Rev. Robert F. Young, S.J., is acting as faculty adviser of Beta Tau Chapter in his absence, and he is looking forward to a successful and stimulating year.

GAMMA GAMMA CHAPTER,  
WISCONSIN STATE COLLEGE

Robert Flegl, Secretary of Gamma Gamma Chapter, says that his chapter was very proud to be asked to assist in the installation of the Gamma Epsilon Chapter at the University of Wisconsin on May 21. Seven members of Gamma Gamma were present and participated in the ceremonies. Immediately after the installation, the following new officers of Gamma Gamma were installed: President, Mark Follstad; Vice-President, Robert Flegl; Secretary, Jo Ann Sweeney; Treasurer, Bernardine Bakiewicz. The year's activities were concluded by a picnic on May 29.

MLA TO STUDY ROLE OF FOREIGN  
LANGUAGES IN AMERICAN LIFE

Supported by a grant of \$120,000 from the Rockefeller Foundation, a three-year inquiry into the role which foreign languages and literatures now play and should hereafter play in American life was begun October 1 by the Modern Language Association of America. The project is under the direction of Professor William Riley Parker, Executive Secretary of the MLA.

The inquiry was prompted by the fact that, while America's changed position in the world would seem to make it highly desirable for more and more Americans to know foreign languages, the study of foreign languages in this country has nevertheless declined steadily in recent years. An effort will be made to learn what attitudes or practices, on the part of language teachers or others, have been responsible for this paradoxical situation.

THIRTEENTH LATIN TEACHERS' INSTITUTE  
AT SAINT LOUIS UNIVERSITY

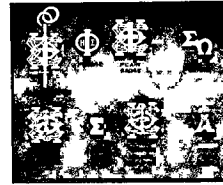
The Saint Louis University Summer Session sponsored its thirteenth Latin Teachers' Institute, June 18 and 19, 1952. The Institute was open without charge to all interested in the teaching of the Classics. The theme was: Latin in the Revival of Liberal Studies. Professor B. L. Ullman of the University of North Carolina was visiting lecturer.

FIFTH UNIVERSITY OF KENTUCKY FOREIGN  
LANGUAGE CONFERENCE DRAWS LARGE  
ATTENDANCE

The fifth University of Kentucky Foreign Language Conference, April 24-26, 1952, drew an attendance of approximately 575 persons, representing 240 institutions in 38 states and eight foreign countries: Canada, Ecuador, England, France, Germany, Mexico, Sweden, and Yugoslavia. The report appeared in the May number of the Classics News-Letter published by the University's Department of Ancient Languages, under the editorship of Professor Jonah W. D. Skiles.

Among the 41 language areas represented the first nine (in number of persons interested) were: French (169), Latin (123), Spanish (118), German (101), Greek (90), English (22), Russian (20), Hebrew (16), and Italian (12).

The Sixth Conference will be held April 23-25, 1953.



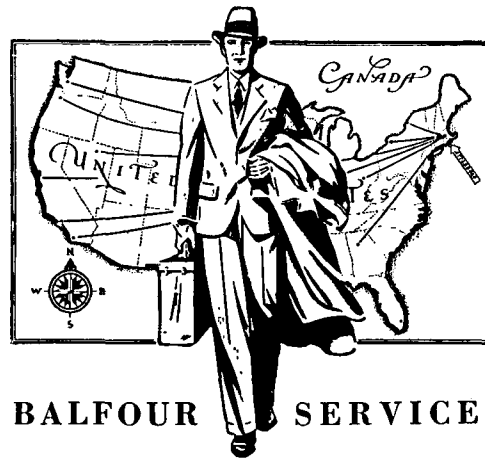
OFFICIAL ETA SIGMA PHI INSIGNIA

- Plain badge, 10K gold . . . . . \$5.50
- Close set pearl badge . . . . . 8.50
- Crown set pearl badge . . . . . 13.25
- Pledge pin . . . . . 1.00
- Official plain badge key . . . . . 6.50

20% Federal Tax and any State Tax in effect must be added to prices.

ORDERS must be received from Chapter Officers.

**L. G. BALFOUR COMPANY**  
Attleboro, Massachusetts



**BALFOUR SERVICE**

**FROM COAST TO COAST**

Branch Stores are located in educational centers throughout the United States for your convenience. Balfour representatives make frequent calls on fraternity chapters to display new and attractive Balfour merchandise.

- |                                    |                            |                              |
|------------------------------------|----------------------------|------------------------------|
| ALABAMA<br>Birmingham              | MARYLAND<br>Baltimore      | OHIO<br>Columbus             |
| CALIFORNIA<br>Los Angeles          | MASSACHUSETTS<br>Attleboro | Kenton                       |
| San Francisco                      | Boston                     | OKLAHOMA<br>Oklahoma City    |
| COLORADO<br>Boulder                | MICHIGAN<br>Ann Arbor      | PENNSYLVANIA<br>Bethlehem    |
| Denver                             | Detroit                    | Philadelphia                 |
| DISTRICT OF COLUMBIA<br>Washington | MINNESOTA<br>Minneapolis   | Pittsburgh                   |
| GEORGIA<br>Atlanta                 | MISSOURI<br>Columbia       | State College                |
| ILLINOIS<br>Champaign              | Kansas City                | SOUTH CAROLINA<br>Columbia   |
| Chicago                            | St. Louis                  | TENNESSEE<br>Knoxville       |
| INDIANA<br>Bloomington             | NEBRASKA<br>Lincoln        | TEXAS<br>Austin              |
| Indianapolis                       | NEW HAMPSHIRE<br>Durham    | Dallas                       |
| IOWA<br>Des Moines                 | Hanover                    | Houston                      |
| Iowa City                          | NEW YORK<br>Brooklyn       | UTAH<br>Salt Lake City       |
| KANSAS<br>Lawrence                 | Ithaca                     | VIRGINIA<br>Lexington        |
| KENTUCKY<br>Louisville             | New York City              | Richmond                     |
| LOUISIANA<br>New Orleans           | Waterford                  | WASHINGTON<br>Pullman        |
|                                    | NORTH CAROLINA<br>Durham   | Seattle                      |
|                                    | OHIO<br>Cincinnati         | WEST VIRGINIA<br>Martinsburg |
|                                    | Cleveland                  | WISCONSIN<br>Madison         |

**L. G. BALFOUR COMPANY**  
Factories: ATTLEBORO, MASSACHUSETTS

CURRENTLY ACTIVE CHAPTERS

- Beta: Northwestern University, Evanston, Illinois  
Faculty Adviser: Grundy Steiner
- Gamma: Ohio University, Athens, Ohio  
Prytanis: David L. White
- Delta: Franklin College, Franklin, Indiana  
Prytanis: William Bridges
- Epsilon: State University of Iowa, Iowa City, Iowa  
Prytanis: John Lenaghan
- Zeta: Denison University, Granville, Ohio  
Faculty Adviser: Professor L. Richard Dean
- Eta: Florida State University, Tallahassee, Fla.  
Prytanis: Edward F. Olechovsky
- Theta: Indiana University, Bloomington, Indiana  
Prytanis: Mary Carol Dressel
- Lambda: University of Mississippi, University, Miss.  
Prytanis: William Dulaney
- Pi: Birmingham-Southern College, Birmingham, Ala.  
Prytanis: William R. Fox
- Sigma: Miami University, Oxford, Ohio  
Prytanis: Clyde Smith
- Tau: University of Kentucky, Lexington, Kentucky  
Prytanis: Jack Woodhouse
- Upsilon: Mississippi State College for Women,  
Columbus, Mississippi  
Prytanis: Norma Fay Beeman
- Psi: Vanderbilt University, Nashville, Tennessee  
Prytanis: Jane Wright
- Omega: College of William and Mary,  
Williamsburg, Virginia  
Prytanis: Janice E. Ferrell
- Alpha Delta: Agnes Scott College, Decatur, Georgia  
Prytanis: Sarah Leathers
- Alpha Epsilon: Lehigh University, Bethlehem, Pa.  
Prytanis: R. Andrew Shackles
- Alpha Theta: Hunter College, New York, N. Y.  
Prytanis: Margit Minkin
- Alpha Xi: Washington University, St. Louis, Mo.  
Prytanis: Jack Thacker
- Alpha Omicron: Lawrence College, Appleton, Wis.  
Prytanis: Jim Samter
- Alpha Pi: Gettysburg College, Gettysburg, Pa.  
Prytanis: Fred Segner
- Alpha Rho: Muhlenberg College, Allentown, Pa.  
Prytanis: Robert J. Wilde
- Alpha Tau: Ohio State University, Columbus, Ohio  
Prytanis: Harry C. Rutledge
- Alpha Upsilon: Wooster College, Wooster, Ohio  
Faculty Adviser: Professor Eva May Newnan
- Alpha Phi: Millsaps College, Jackson, Miss.  
Prytanis: Roy Epperson
- Alpha Chi: Tulane University, New Orleans, La.  
Prytanis: John M. Lee
- Alpha Psi: Washington and Jefferson College,  
Washington, Pennsylvania  
Prytanis: Ned Nakles
- Alpha Omega: Louisiana State University  
Baton Rouge, Louisiana  
Prytanis: Wilmer P. Murphy
- Beta Alpha: University of South Dakota, Vermillion, S. D.  
Prytanis: Dorothy Jaquith
- Beta Gamma: Westhampton College, University of  
Richmond, Richmond, Virginia  
Prytanis: Geraldine Kantner
- Beta Zeta: Saint Louis University, Saint Louis, Mo.  
Prytanis: Anton J. Pregaldin
- Beta Eta: Westminster College, Fulton, Missouri  
Prytanis: Joe Trower
- Beta Theta: Hampden-Sydney College,  
Hampden-Sydney, Virginia  
Prytanis: C. Scott Kelly
- Beta Iota: Wake Forest College, Wake Forest, N. C.  
Prytanis: Richard C. Barnett
- Beta Kappa: College of Notre Dame of Maryland,  
Baltimore, Maryland  
Prytanis: Sally Nelson
- Beta Lambda: Marymount College, Salina, Kansas  
Prytanis: Lillian Beazley
- Beta Mu: Butler University, Indianapolis, Indiana  
Prytanis: Harold Cline
- Beta Nu: Mary Washington College,  
Fredericksburg, Virginia  
Prytanis: Suzanne Seelman
- Beta Xi: Rosary College, River Forest, Illinois  
Prytanis: Patricia Young
- Beta Omicron: Mount Mary College, Milwaukee, Wis.  
Prytanis: Joan Bartelsen
- Beta Rho: Duke University, Durham, North Carolina  
Prytanis: Shirley Markee
- Beta Sigma: Marquette University, Milwaukee, Wis.  
Prytanis: Margaret Mary O'Brien
- Beta Tau: Georgetown University, Washington, D. C.  
Prytanis: Jan M. Z. Kaczmarek
- Beta Upsilon: Marshall College, Huntington, W. Va.  
Prytanis: Mary De Raimo
- Beta Phi: Adelphi College, Garden City, New York  
Faculty Adviser: Professor Frederika  
Blankner
- Beta Chi: Loyola College, Baltimore, Maryland  
Prytanis: Leroy A. Wagner
- Beta Psi: Southwestern at Memphis, Memphis, Tenn.  
Prytanis: David Alexander
- Beta Omega: Ball State Teachers College, Muncie, Ind.  
Prytanis: Phyllis Harris
- Gamma Alpha: Indiana State Teachers College  
Terre Haute, Indiana  
Prytanis: Lois Rinsch
- Gamma Beta: Bowling Green State University  
Bowling Green, Ohio  
Prytanis: David Moe
- Gamma Gamma: Wisconsin State College, Milwaukee, Wis.  
Prytanis: Mark Follstad
- Gamma Delta: Yeshiva University, New York, N. Y.  
Prytanis: Manfred Fulda
- Gamma Epsilon: University of Wisconsin, Madison, Wis.  
Prytanis: Toby Reynolds
- Gamma Zeta: Albion College, Albion, Michigan  
Prytanis: Joseph T. de Nicola